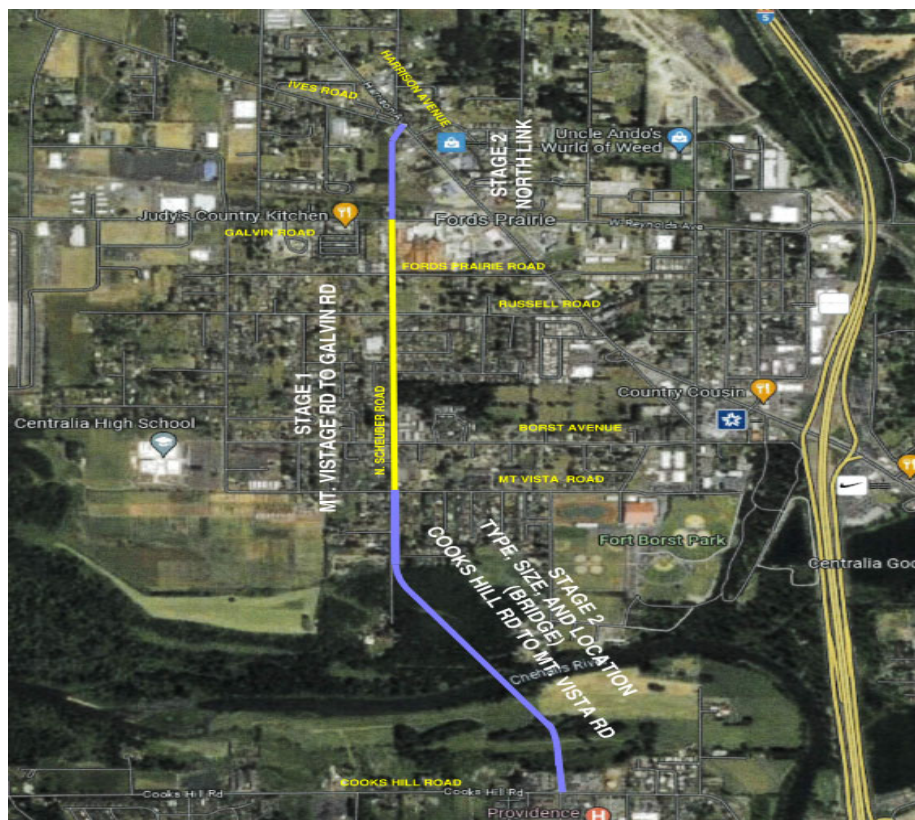




Lewis County Department of Public Works

Josh S. Metcalf, PE, Director  
Geoff Soderquist, PE, County Engineer

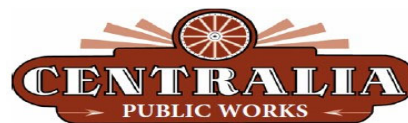
## LEWIS COUNTY / CITY OF CENTRALIA WESTSIDE CONNECTOR PHASE I IMPROVEMENTS



Stage 1 - Mt. Vista to Galvin Road

Stage 2 – Type, Size, and Location (Bridge) Update  
and

North Link – Galvin Road to Ives Road / Harrison Avenue Intersection



Stage 3 – Future Improvements - SR 6 to Cooks Hill Road

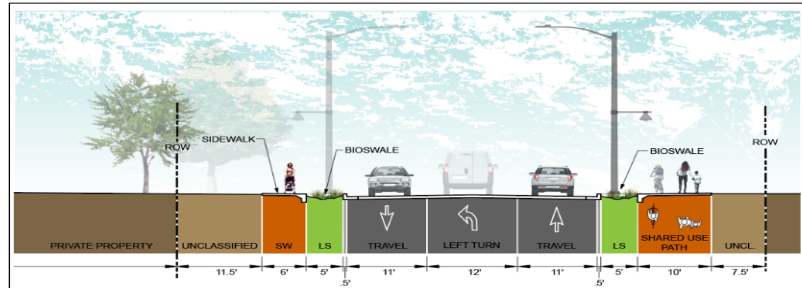
## OVERVIEW

Lewis County, the City of Centralia, and our consultant, HDR Engineering, are collaboratively working together to provide a connection (Westside Connector) west of Interstate 5 that connects Harrison Avenue (Hwy 99) to State Route 6 to improve community connectivity, emergency services, response time, and multimodal access to the hospital, services, schools, and parks.

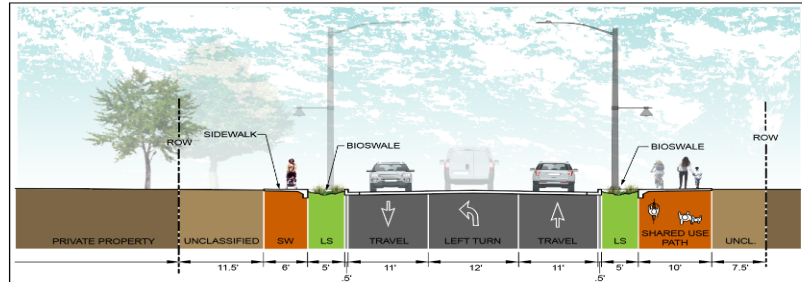
The Westside Connector Phase I improvements will be addressed in a three (3) Stage process:

**Stage 1 Improvements** will consist of improving N. Scheuber Road from Mt. Vista Road north to Galvin Road. These improvements will consist of widening N. Scheuber Road to provide one through lane in each direction with a center two way left turn lane, bike lanes, bioretention and stormwater facilities, street lighting, cement concrete curb, gutter, and sidewalks.

**PROPOSED NORTH SCHEUBER CROSS SECTION - Between Fords Prairie and Galvin**



**PROPOSED NORTH SCHEUBER CROSS SECTION - Between Mount Vista and Fords Prairie**



These same improvement cross-sections will be used for assessing costs for of the North Link of the Westside Connector corridor between Galvin Road and the Ives Road / Harrison Avenue intersection in Stage 2.



(Stage 2 Conceptual Rendering)

**Stage 2** of this project will re-evaluate the Type, Size, Location, and construction cost for a future new bridge crossing over the Chehalis River between Cooks Hill Road and Mt. Vista Road identified in the original Type, Size, and Location study conducted for the project in 2009 and the north link (N. Scheuber Road between Galvin Road and the Ives Road / Harrison Avenue intersection).

**Future Stage 3** work will consist of evaluating the horizontal and vertical alignments of the Westside Connector corridor's future south link (S. Scheuber Road – between State Route 6 and Cooks Hill Road) to better assess future right-of-way and construction costs needed for the improvement of the north and south links of the Westside Connector corridor.



(South Link Conceptual Rendering)

The findings of Stage II and III of the Westside Connector Phase I Improvement Project will be used to develop and procure funding grants for use in the ultimate construction of the new Chehalis River Bridge and north and south links of the Westside Connector corridor.

## SCHEDULE

Stage 1 – Complete Design/Bid 2024 / Construction in 2025.

Stage 2 – Bridge Type, Size, and Location Update – 2024 to Late 2025

Stage 3 – SR 6 to Cooks Hill Road Assessment – Future - To Be Determined

NOTE: There is no current timeline for the Construction of Stage 2 and Stage 3 improvements

## **CAN THE PUBLIC PROVIDE INPUT?**

Public participation is critical to the success of projects of this type and is strongly encouraged. A series of meetings will be held at key milestones during the design / development of the project to invite comments from the public. In addition follow-up information will be posted to [www.cityofcentralia.com](http://www.cityofcentralia.com) and [Current Projects \(lewiscountywa.gov\)](#) websites for the community to access and comment on during the design / development phase of the project.

**CONTACTS:** If you have questions or comments regarding the Westside Connector project, please contact:

Mark Burch  
Special Projects Manager  
Lewis County Public Works  
(360) 740 -2650  
[Mark.burch@lewiscountywa.gov](mailto:Mark.burch@lewiscountywa.gov)

Or

Patty Page, P.E.  
City Engineer  
Centralia, WA  
(360) 330 -7512  
[PPage@cityofcentralia.com](mailto:PPage@cityofcentralia.com)