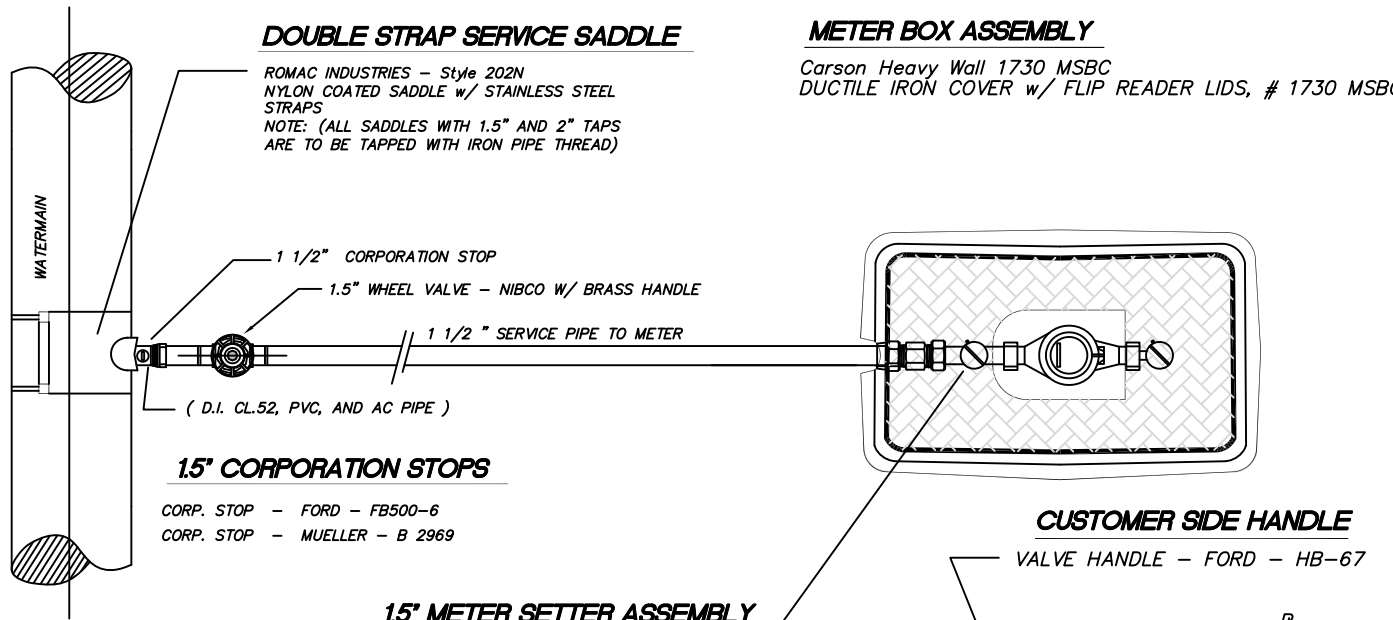


DOUBLE STRAP SERVICE SADDLE

ROMAC INDUSTRIES - Style 202N
 NYLON COATED SADDLE w/ STAINLESS STEEL STRAPS
 NOTE: (ALL SADDLES WITH 1.5" AND 2" TAPS ARE TO BE TAPPED WITH IRON PIPE THREAD)

METER BOX ASSEMBLY

Carson Heavy Wall 1730 MSBC
 DUCTILE IRON COVER w/ FLIP READER LIDS, # 1730 MSBC

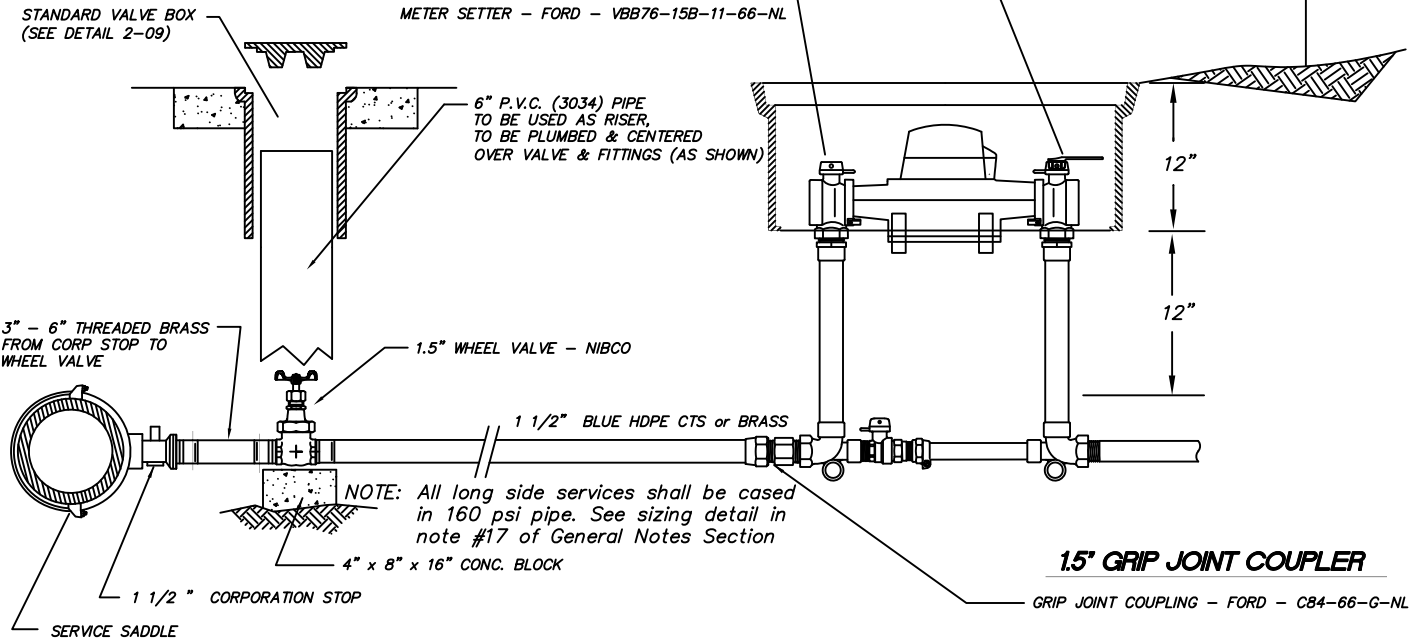


1.5' CORPORATION STOPS

CORP. STOP - FORD - FB500-6
 CORP. STOP - MUELLER - B 2969

1.5' METER SETTER ASSEMBLY

METER SETTER - FORD - VBB76-15B-11-66-NL



NOTE: All long side services shall be cased in 160 psi pipe. See sizing detail in note #17 of General Notes Section

NOTES:

1. ALL SERVICE SADDLES SHALL HAVE RUBBER GASKET, I.P. THREADS AND NYLON COATED. ALL 1.5" AND 2" SERVICE LINES WILL BE SADDLED.
2. IN APPROVED SOIL SENSITIVE AREAS HDPE MAINS AND SERVICE LINES ARE REQUIRED. A TONING (tracer) WIRE, UL LISTED, TYPE UF, SOLID CORE, 12 GAUGE INSULATED COPPER IS REQUIRED. AN IDEAL TWISTER DB PLUS WIRE CONNECTOR, MODEL 60 IS REQUIRED TO CONNECT TRACER WIRES TOGETHER (i.e. tracer wire extension from spool to spool, service to main, main to main at intersections, and hydrant to main installations). Blue HDPE CTS shall be substituted for type K copper in service lines.
3. ALL THREAD FITTING CONNECTIONS SHALL BE DRESSED WITH AN APPROVED JOINTING COMPOUND
4. ANTI-SEIZE SHALL BE USED ON ALL BOLT THREADS
5. 1.5" WHEEL VALVE - NIBCO # T-113 w/ BRASS HANDLE
6. STAINLESS PIPE STIFFENERS ARE REQUIRED WHERE HDPE PIPE IS USED

APPROVED BY	REVISED DATE	CITY OF CENTRALIA	STD. PLAN NO.
CITY ENGINEER	02/2020	1 1/2" SINGLE METER SERVICE STANDARD	2-04
2022 Standard Drawings			