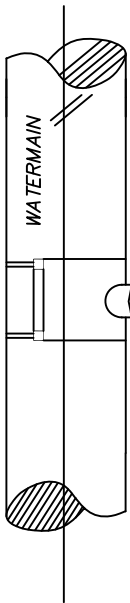


DOUBLE STRAP SERVICE SADDLE

ROMAC INDUSTRIES - Style 202N
 NYLON COATED SADDLE w/
 STAINLESS STEEL STRAPS

METER BOX ASSEMBLY

Carson Heavy Wall 1324 MSBC
 DUCTILE IRON COVER w/ FLIP READER LIDS, # 1324 MSBC



1" CORPORATION STOPS - D.I. (Direct tap only)

CORP. STOP - FORD - F1000-4-G
 CORP. STOP - MUELLER - B-25008

1" CORPORATION STOPS - A.C., P.V.C. only

CORP. STOP - FORD - FB1100-4-G
 CORP. STOP - MUELLER - B-25028

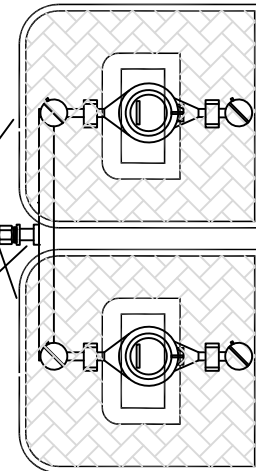
USE (2) "SINGLE" BOXES

1" HDPE CTS or K TYPE COPPER LINE

(D.I. CL.52 only) NO SADDLE DIRECT TAP

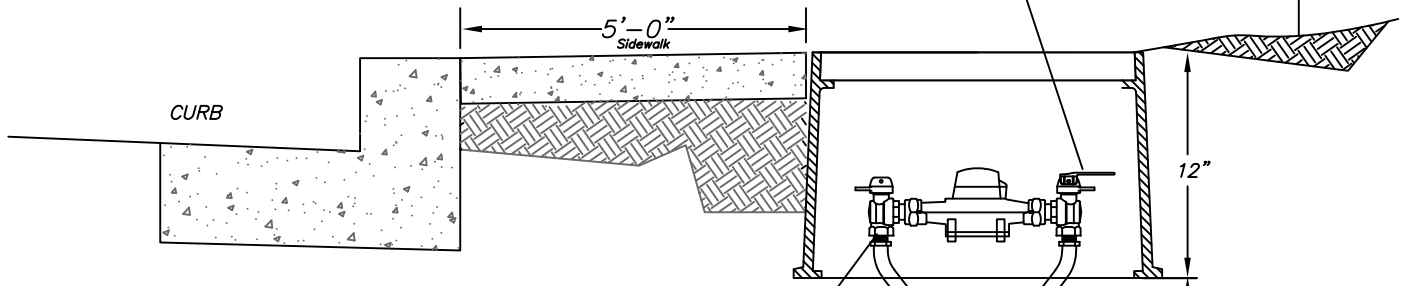
BRANCH NOTES

BUILD BRANCH ASSEMBLY TO ALLOW FOR DISTANCE FROM BOX TO BOX (boxes will be set side by side)
 BRANCH MATERIAL SHALL BE MADE OF BRASS MATERIALS



CUSTOMER SIDE HANDLE

VALVE HANDLE - FORD - HB-34



3/4" METER SETTER

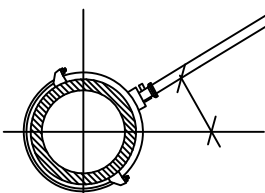
METER SETTER - FORD - VBB72-15W-11-33-NL

1" Blue HDPE CTS or K TYPE COPPER LINE

NOTE: All long side services shall be cased in 160 psi pipe. See sizing detail in note #17 of General Notes Section

1" Grip Joint Coupler

GRIP JOINT COUPLING - FORD - C84-44-G



NOTES:

- ALL SERVICE SADDLES SHALL HAVE RUBBER GASKET, I.P. THREADS AND NYLON COATED.
- IN APPROVED SOIL SENSITIVE AREAS HDPE MAINS AND SERVICE LINES ARE REQUIRED. A TONING (tracer) WIRE, UL LISTED, TYPE UF, SOLID CORE, 12 GAUGE INSULATED COPPER IS REQUIRED. AN IDEAL TWISTER DB PLUS WIRE CONNECTOR, MODEL 60 IS REQUIRED TO CONNECT TRACER WIRES TOGETHER (i.e. trace wire extension from spool to spool, service to main, main to main at intersections, and hydrant to main installations). Blue HDPE CTS sched. 200 psi shall be substituted for type K copper in service lines.
- DUCTILE IRON MAINS SHALL BE DIRECT TAPPED ONLY
- ASBESTOS CEMENT (A.C.) AND PVC MAINS SHALL REQUIRE A SADDLE FOR TAPPING
- STAINLESS STEEL PIPE STIFFENERS ARE REQUIRED WHERE HDPE PIPE IS USED

APPROVED BY	REVISED DATE	CITY OF CENTRALIA	STD. PLAN NO.
CITY ENGINEER	02/2020	3/4" - DUAL METER SERVICE STANDARD	2-06