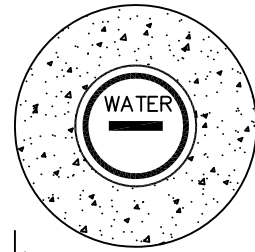
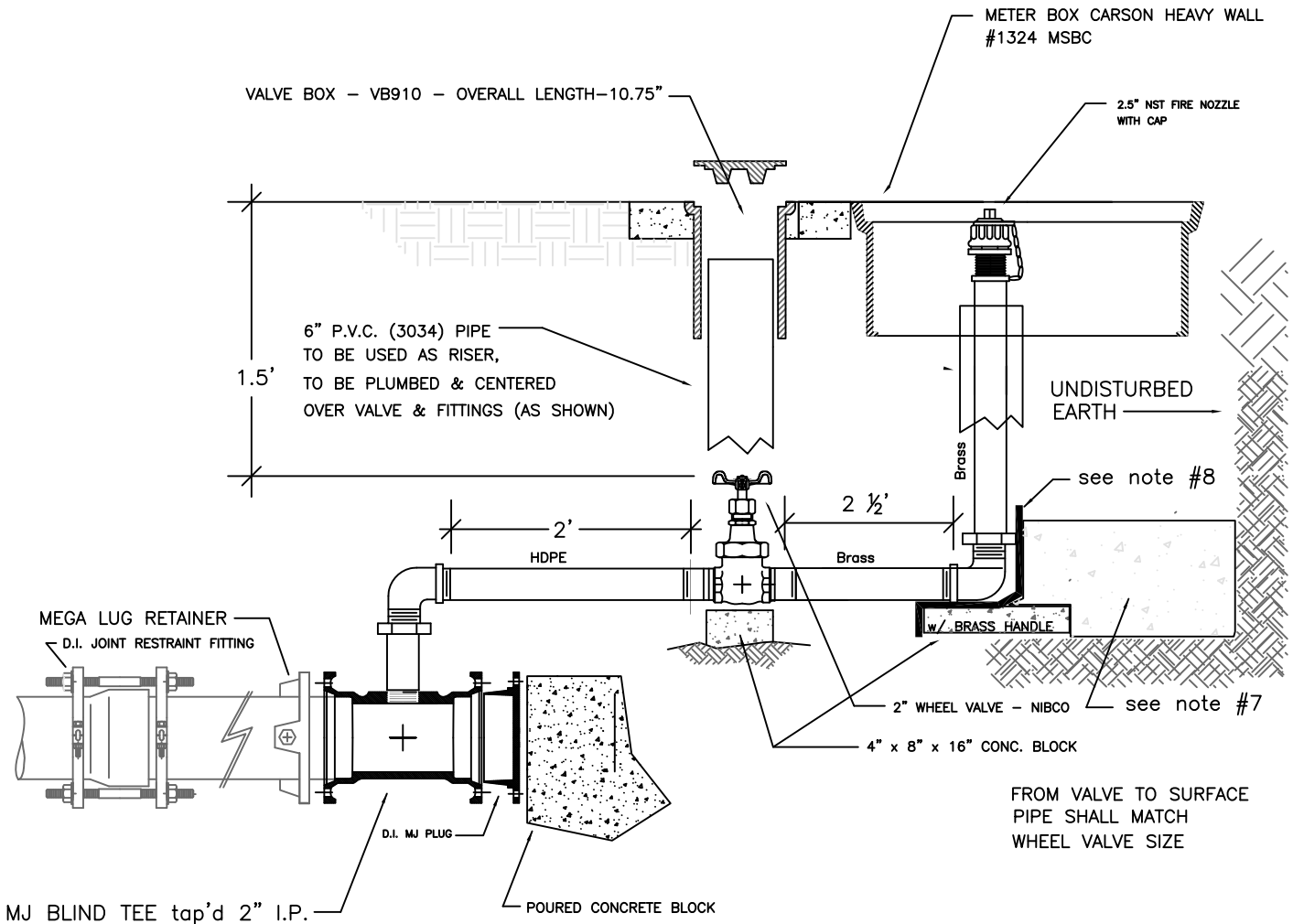


**BLOW OFF ASSEMBLY GENERAL NOTES**

1. IF A THRUST BLOCK IS POURED THEN IT SHALL BE REQUIRED TO USE 12 ML. PLASTIC OR CONSTRUCTION FABRIC TO PROTECT THE BLOW-OFF ASSEMBLY
2. ALL BLOW-OFF ASSEMBLIES ATTACHED TO P.V.C. MAINS MUST HAVE 12 GAUGE COATED COPPER TRACER WIRE TIED OFF AT THE VALVE BOX BODY AND EXTENDING ONE FOOT BEYOND TOP OF VALVE BOX.
3. VALVE BOXES TO BE CENTERED OVER THE BLOW-OFF ASSEMBLY
4. FITTINGS FROM D.I. BLIND FLG. TEE TO 2" WHEEL VALVE WILL BE 2" DIAMETER AND MADE OF BRASS, FROM WHEEL VALVE TO END OF PIPE SHALL BE G.I.
5. VALVE BOXES WILL BE, OLYMPIC FOUNDRY INC., VB910 VALVE BOX WITH "WATER" CAST IN LID, OVERALL LENGTH IS 10.75"
6. 2" WHEEL VALVE - NIBCO # T-113 w/ BRASS HANDLE
7. POURED IN PLACE CONCRETE BLOCK  
BLOCK SIZE ( 2 FT. WIDE, 2 FT. DEEP, AND 3 FT. MIN. LENGTH TO UNDISTURBED NATIVE )  
LENGTH IS A VARIABLE DEPENDING UPON DISTANCE TO UNDISTURBED NATIVE SOIL



2' DIAMETER  
POURED COMMERCIAL CONCRETE (3000 psi)  
COLLAR - 4 INCHES THICK  
CENTERED ON VALVE BOX LID



APPROVED BY	REVISED DATE	CITY OF CENTRALIA	STD. PLAN NO.
CITY ENGINEER	06/2017	2" BLOW-OFF ASSEMBLY	2-08-A
		NON PAVEMENT AREAS	