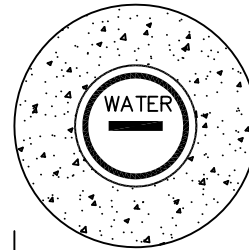
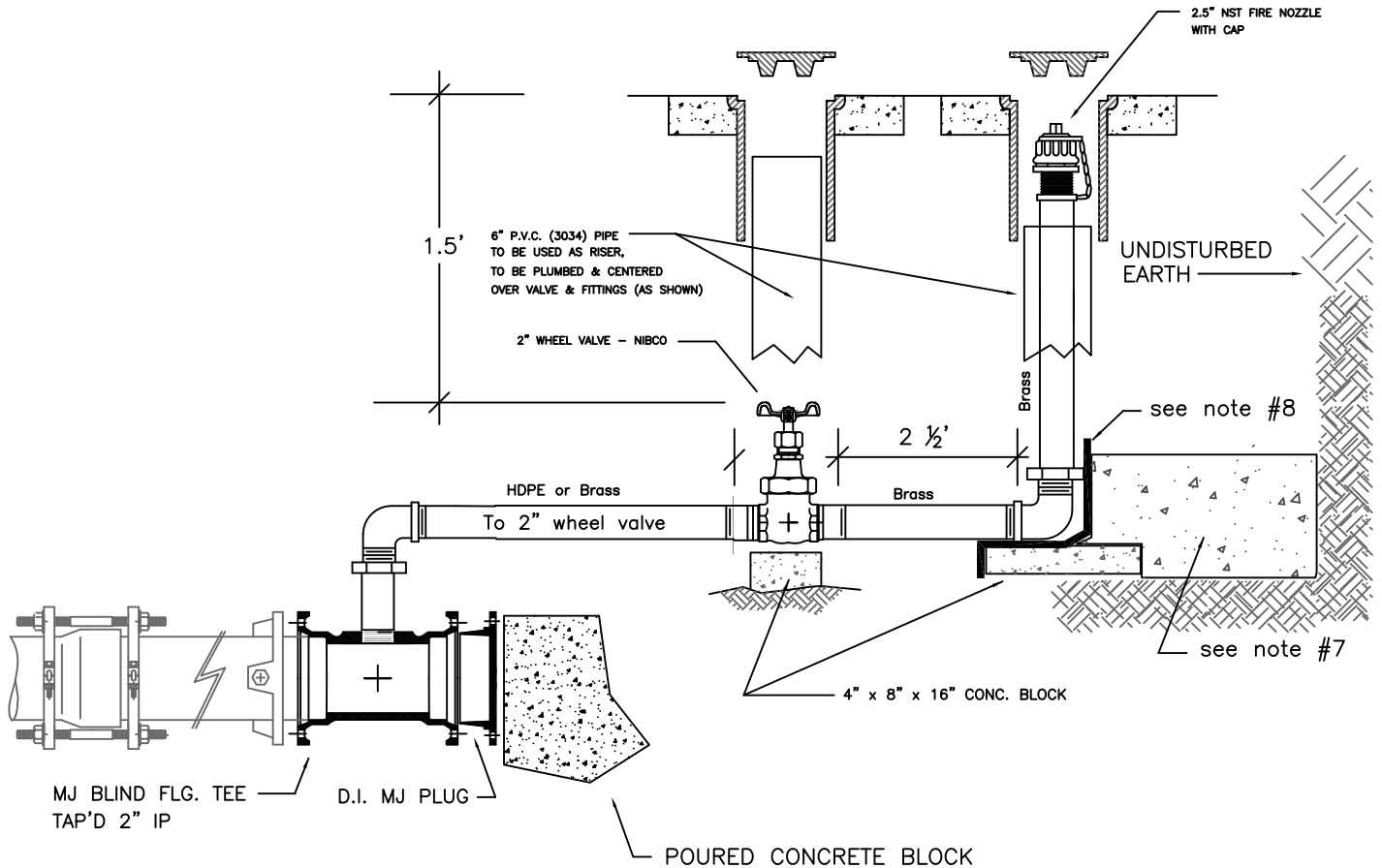


BLOW OFF ASSEMBLY GENERAL NOTES

1. IF A THRUST BLOCK IS POURED THEN IT SHALL BE REQUIRED TO USE 12 MIL. PLASTIC OR CONSTRUCTION FABRIC TO PROTECT THE BLOW-OFF ASSEMBLY
2. ALL BLOW-OFF ASSEMBLIES ATTACHED TO P.V.C. MAINS MUST HAVE 12 GAUGE COATED COPPER TRACER WIRE TIED OFF AT THE VALVE BOX BODY AND EXTENDING ONE FOOT BEYOND TOP OF VALVE BOX.
3. VALVE BOXES TO BE CENTERED OVER THE BLOW-OFF ASSEMBLY AND COVER SHALL BE SET AT A DISTANCE OF 1" MIN. TO 3" MAX. BETWEEN THE HOSE CAP CONNECTION ON BLOW-OFF ASSEMBLY AND THE BOTTOM OF COVER
4. FITTINGS FROM D.I. BLIND FLG. TEE TO 2" OPERATING VALVE WILL BE 2" DIAMETER AND MADE OF BRASS, FROM OPERATING VALVE TO HOSE CAP CONNECTION WILL BE 2" DIAMETER AND MADE OF BRASS
5. VALVE BOXES WILL BE, OLYMPIC FOUNDRY INC., VB910 VALVE BOX WITH "WATER" CAST IN LID, OVERALL LENGTH IS 10.75"
6. 2" WHEEL VALVE - NIBCO # T-113 w/ BRASS HANDLE
7. POURED IN PLACE CONCRETE BLOCK
BLOCK SIZE (2 FT. WIDE, 2 FT. DEEP, AND 3 FT. MIN. LENGTH TO UNDISTURBED NATIVE SOIL.)
LENGTH IS A VARIABLE DEPENDING UPON DISTANCE TO UNDISTURBED NATIVE SOIL
8. ALL FITTINGS CONTACTED BY POURED IN PLACE CONCRETE SHALL BE PROTECTED BY 12 MIL. PLASTIC, PLACED BETWEEN MATERIALS



POURED COMMERCIAL CONCRETE (3000 psi)
COLLAR - 4 INCHES THICK CENTERED ON VALVE BOX LID AND BLOW-OFF ASSEMBLY LID.



APPROVED BY	REVISED DATE	CITY OF CENTRALIA	STD. PLAN NO.
CITY ENGINEER	06/2017	2" BLOW-OFF ASSEMBLY IN PAVEMENT AREAS	2-08