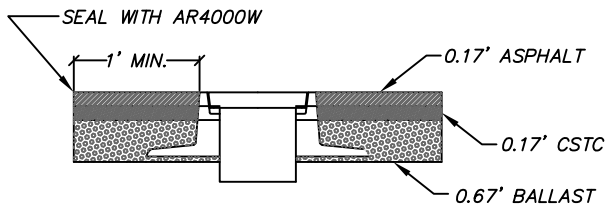
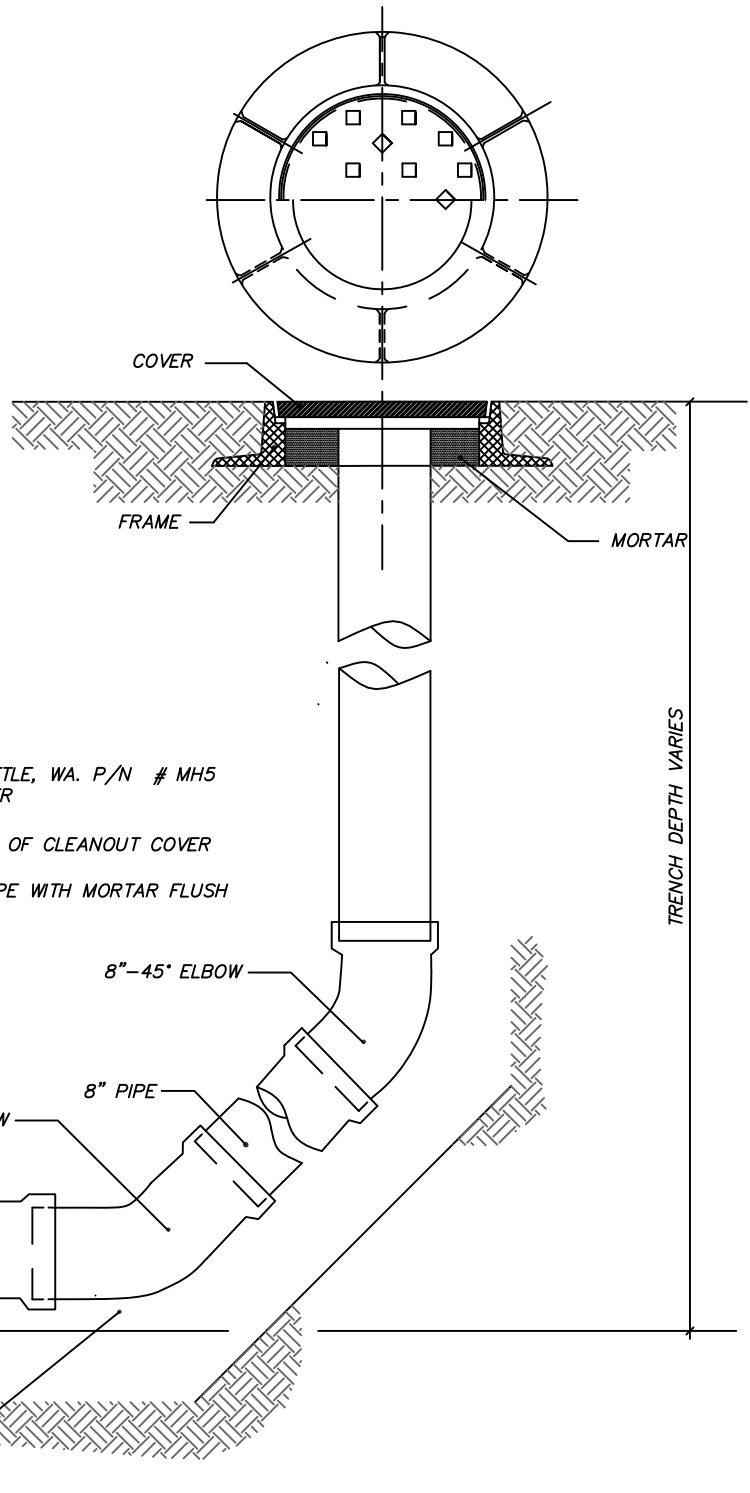


OUTSIDE PAVED AREA



INSIDE PAVED ROADWAY



NOTES

1. ALL SEWER PIPE SHALL BE ASTM 3034 SDR 35.
2. CLEANOUTS SHALL NOT BE INSTALLED ON SEWER MAINS LARGER THAN 8" DIAMETER.
3. CLEANOUT COVER SHALL BE OLYMPIC FOUNDRY, SEATTLE, WA. P/N # MH5 11" x 4" FLANGE DOWN FRAME, C/W 12.25" DIA. COVER
4. END OF PIPE TO BE LOCATED 1" BELOW THE BOTTOM OF CLEANOUT COVER
5. FILL THE AREA BETWEEN THE FRAME AND O.D. OF PIPE WITH MORTAR FLUSH TO THE END OF THE PIPE.

APPROVED BY	REVISED DATE	CITY OF CENTRALIA	STD. PLAN NO.
CITY ENGINEER	06/2017	CLEANOUT	3-04