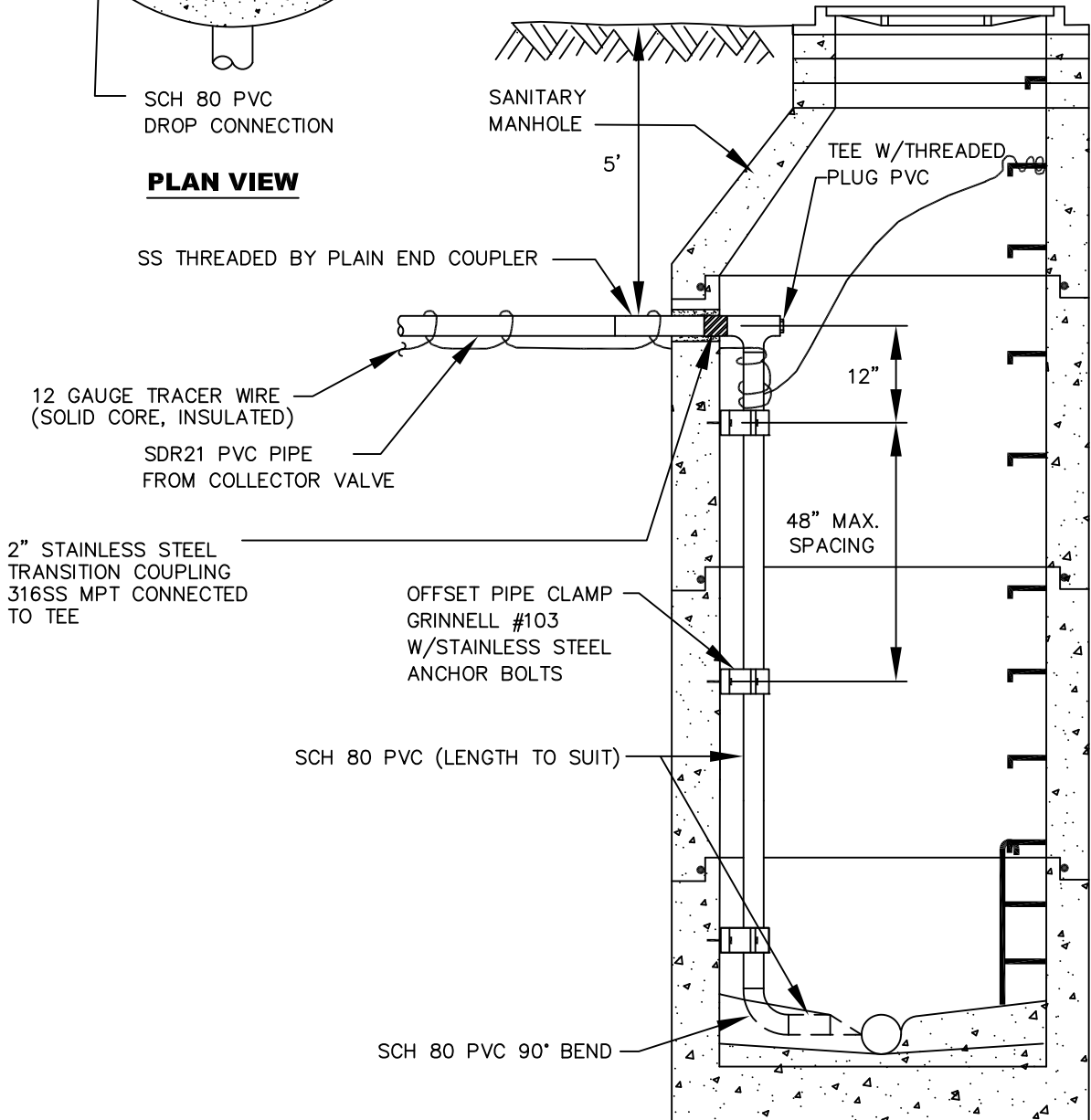


CITY APPROVAL REQUIRED FOR WORK INSIDE MANHOLES.
 BREAK OUT EX. CHANNEL AND MATCH CROWN WITH EXIST MAIN. CHANNEL TO BE DIRECTED WITH FLOW OF MANHOLE.
 IF MANHOLE IS LIVE, INSTALL DROP CONNECTION OUTLET ON SHELF.

NOTE:
 12 GAUGE TRACER WIRE SHALL BE COILED AROUND THE FIRST MANHOLE RUNG.

SCH 80 PVC
 DROP CONNECTION

PLAN VIEW



N.T.S.

PRESSURE SEWER DROP CONNECTION

APPROVED BY	REVISED DATE	CITY OF CENTRALIA	STD. PLAN NO.
CITY ENGINEER	06/2017	FORCE MAIN DROP CONNECTION SYSTEM INSIDE MANHOLE	3-15GP