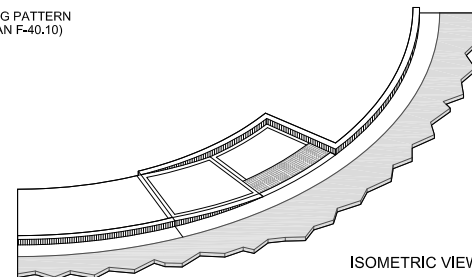
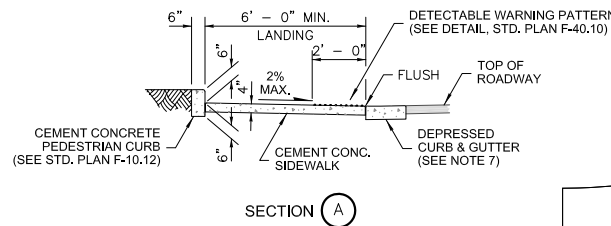
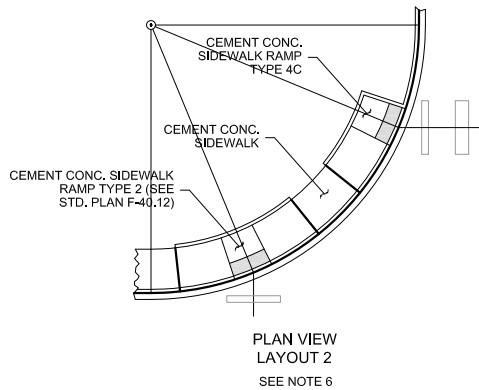
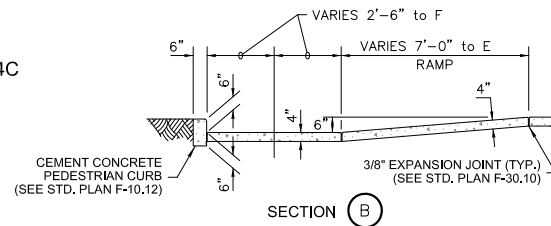


RADIUS AT FACE OF CURB	E	F
20 FEET	10' - 4 3/4"	3' - 8 1/2"
30 FEET	8' - 11 1/2"	3' - 2 1/4"
40 FEET	8' - 4 1/2"	2' - 11 3/4"
50 FEET	8' - 0 3/4"	2' - 10 1/4"
60 FEET	7' - 10 1/4"	2' - 9 3/4"
70 FEET	7' - 8 3/4"	2' - 9"
80 FEET	7' - 7 1/2"	2' - 8 3/4"
90 FEET	7' - 6 1/2"	2' - 8 1/4"
100 FEET	7' - 6"	2' - 8"

INTERMEDIATE RADII CAN BE INTERPOLATED

**NOTES**

1. The ramp shown on this plan is ideal and assumes optimal roadway geometric design. It assumes a curb height of 6". Adjustments must be made for conditions in the field such as roadway grade, actual curb height, etc.
2. The maximum allowable ramp slope is 12H:1V (8.34% grade). The Federal Highway Administration (FHWA) does not accept sidewalk ramps with slopes steeper than 12H:1V. Flatter ramp slopes are permissible. Field verify the forms before pouring concrete.
3. To the maximum extent feasible, the ramp cross slope shall not exceed 2%.
4. The bottom of the ramp shall have a level area (not in excess of 2% in any direction), 4' X 4'.
5. Avoid placing drainage structures, junction boxes or other obstructions in front of ramp access areas.
6. Layout 1 is used to provide access to a single crosswalk parallel to the major street. The bid item "Cement Conc. Sidewalk Ramp Type 4C" does not include the adjacent Curb (or Curb & Gutter), the Sidewalk, or the Cement Conc. Pedestrian Curb.
7. Curb & Gutter is shown, see the Contract Plans for the curb design specified. See Standard Plan F-10.12 for curb details.
8. See Standard Plan F-30.10 for Cement Concrete Sidewalk details, sections, etc.



**5-11**  
 STD. PLAN NO.

APPROVED BY	REVISED DATE
CITY ENGINEER	06/2017

**CITY OF CENTRALIA**  
**SIDEWALK RAMP TYPE 4C**  
**WITH LAYOUTS**